

AVATAR PODS



POD LINEUP



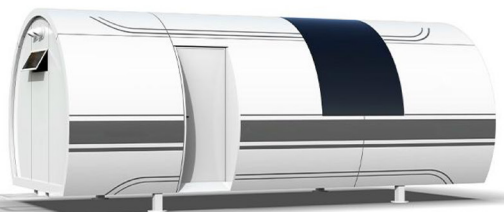
A2
AVATAR POD



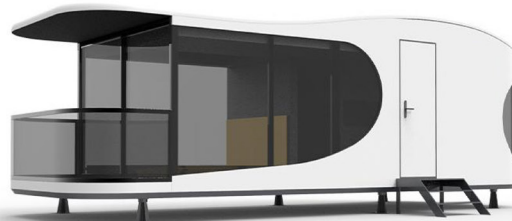
S3
AVATAR POD



J5
AVATAR POD



F7
AVATAR POD



C9
AVATAR POD



B2
AVATAR POD

A2

PRODUCT INFORMATION



Product Number: POD-A2

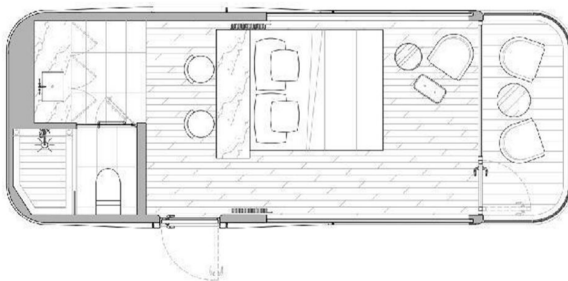
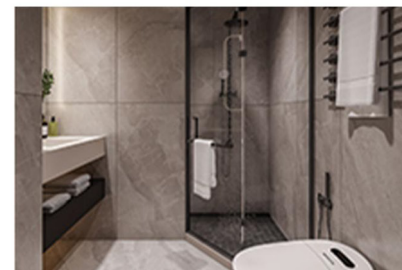
Dimensions: L8,500 x W3,300 x H3,200 mm

Land Area: 28.05 m²

Maximum Occupants: 2 people

Power Consumption: 8 KW

Total Net Weight: 9 tons



S3

PRODUCT INFORMATION



Product Number: POD-S3

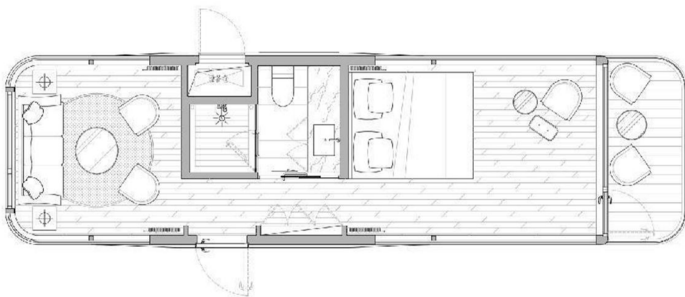
Dimensions: L11,500 x W3,300 x H3,200 mm

Land Area: 38 m²

Maximum Occupants: 4 people

Power Consumption: 10 KW

Total Net Weight: 11 tons



J5

PRODUCT INFORMATION



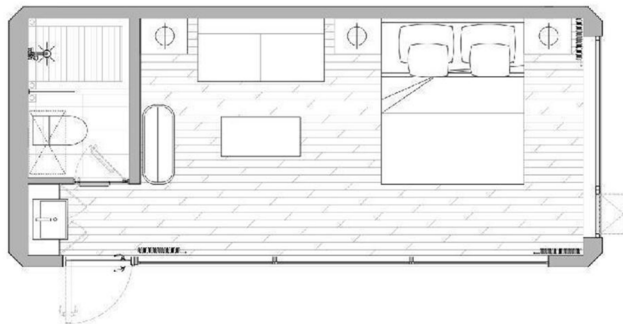
Product Number: POD-J5

Dimensions: L6,000 x W6,000 x H2,900 mm

Land Area: 36 m²

Size: Indoor 18m² / Outdoor 18m²

Power Consumption: 6 KW



F7

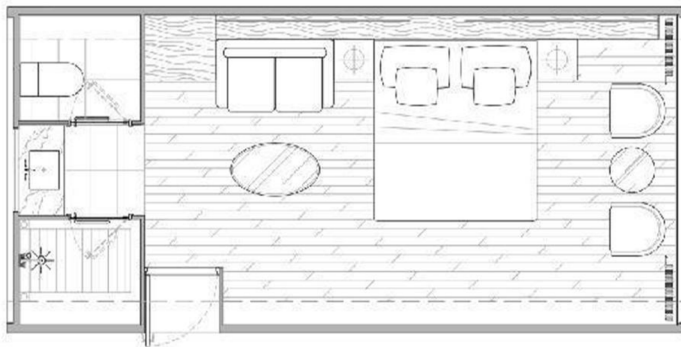
PRODUCT INFORMATION



Product Number: POD-F7

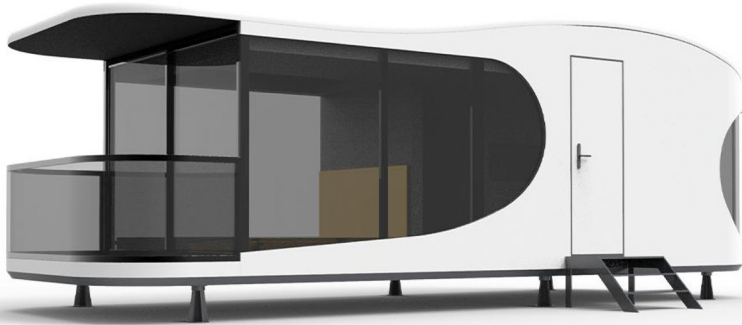
Dimensions: L7,500 x W3,300 x H3,200 mm

Land Area: 27 m²



C9

PRODUCT INFORMATION



Product Number: POD-C9

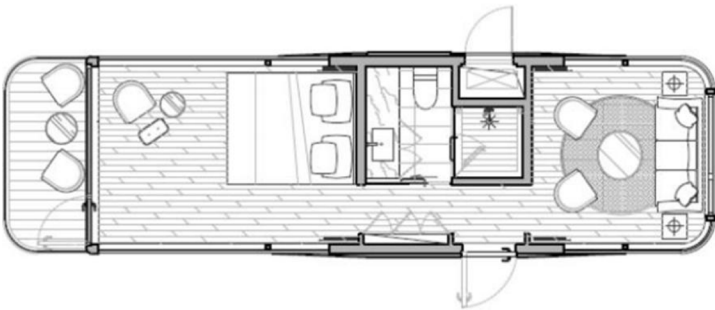
Dimensions: L8,600 x W3,200 x H3,200 mm

Land Area: 27.5 m²

Maximum Occupants: 2 people

Power Consumption: 10 KW

Total Net Weight: 6 tons



B2

PRODUCT INFORMATION



Product Number:

Dimensions: L4,000 x W2,200 x H3,200 mm



CORE COMPETITIVENESS



01

NO RESTRICTIONS, ECO-FRIENDLY

Excellent for valleys, forests, deserts, etc. No construction waste, environmentally friendly.



02

PREFABRICATED, QUICK INSTALLED

60 days production time and only 2 hours to install. On-Site construction is not required.



03

UNIQUE & ATTRACTIVE DESIGN

100% Original design, popular in the tiny home market. Generating buzz across all media outlets.



04

PANORAMIC VIEW, BACK TO NATURE

270° floor-to-ceiling windows, well insulated. Sleep in scenery and enjoy the beauty of nature.

INSTALLATION & TRANSPORTATION



TRANSPORTATION

The product will be loaded on a delivery vehicle (standard semi-trailer, Length: 13.5m, Width: 3m, Height: <4.2m, arranged by our company) and shipped by a flat rack-container.

HOISTING

After arriving at the project site, the product should be hoisted by a local crane service. Remote guidance will be provided by our technical team. The weight of the product is between 6 to 10 tons. It is recommended to arrange >25 tons for loading and unloading.

INSTALLATION

Before installation, the plumbing system, electrical system and foundation should be prepared in accordance with the standard drawings provided by our company. Place the product in the designated location under the guidance of our technicians, and test the performance after the installation is done.



WWW.AVATARPODS.COM

 941.735.2755

 2903 9th Street West. Bradenton, FL 34205